

Eclipse BoostPak

Packaged Gas Booster Systems

Series LS
Version 2

Low Flow Simplex

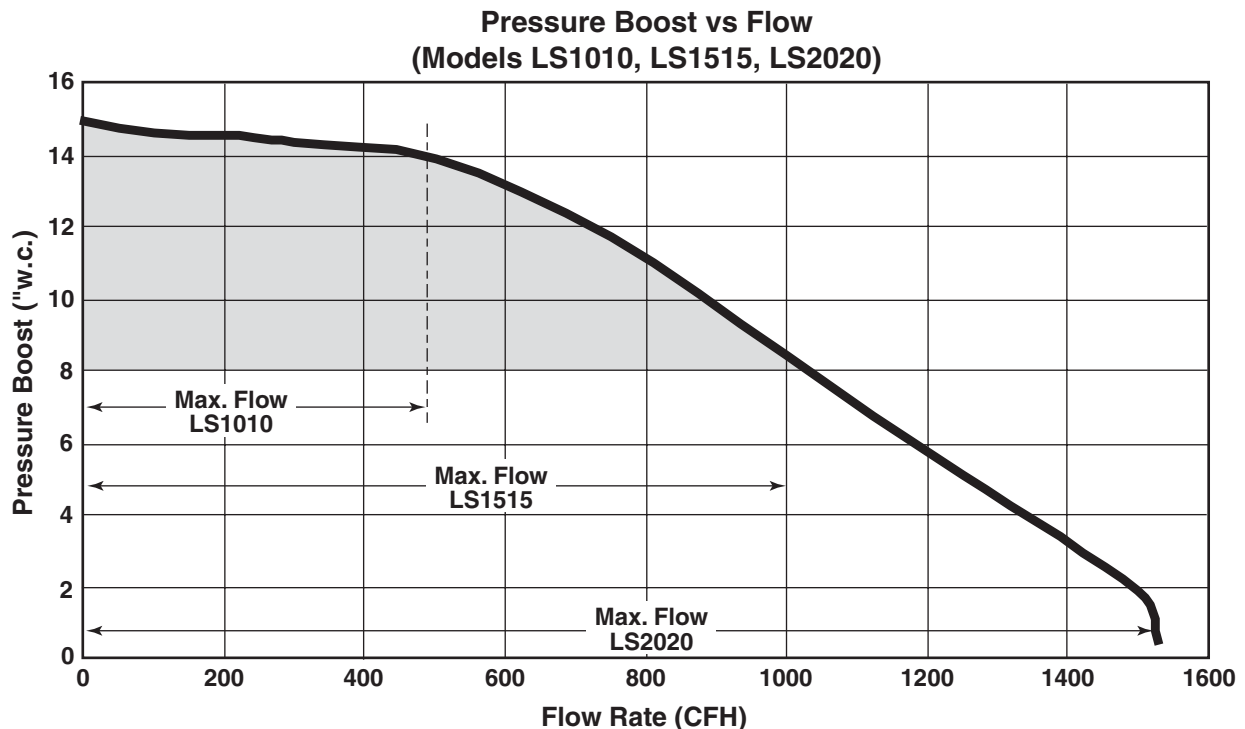
Parameter	Specification		
Low Flow Model Number	LS1010	LS1515	LS2020
Assembly Number	10024840	10024841	10024842
Outlet N.P.T.	1	1.5	2
Inlet N.P.T.	1	1.5	2
Minimum Flow (cfh natural gas) ^a	20	20	20
Maximum Flow (cfh natural gas) ^a	500	1000	1500
Pressure Boost ("w.c.) ^a	b	b	b
Turndown	25:1	50:1	75:1
Primary Voltage	c	c	c
Motor Horsepower	1/4	1/4	1/4
Approximate Weight (Lbs.)	218	218	218

Notes: **a** Ratings are nominal, at standard conditions and depend on customer interface piping.

b Refer to the chart below.

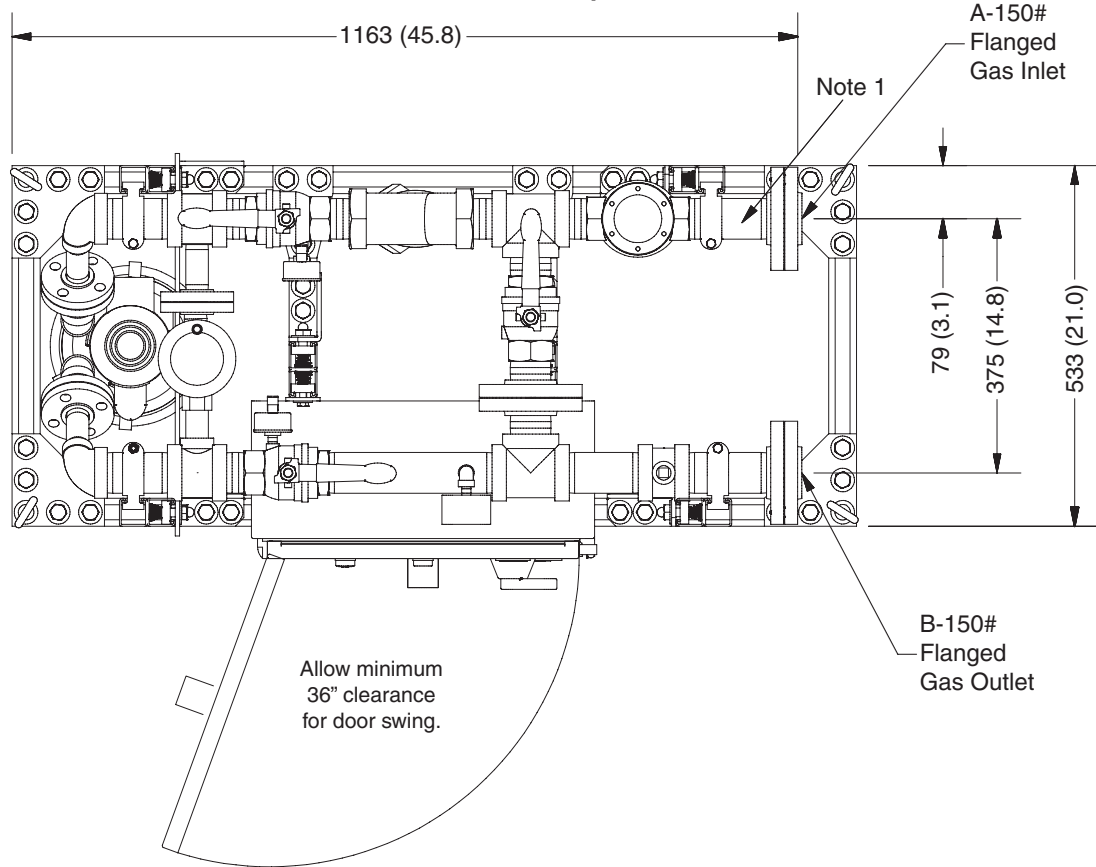
c 115VAC, 1PH, 60HZ.

NEMA 12 rating; NEMA 7 rating option available (footprint increases with this option).

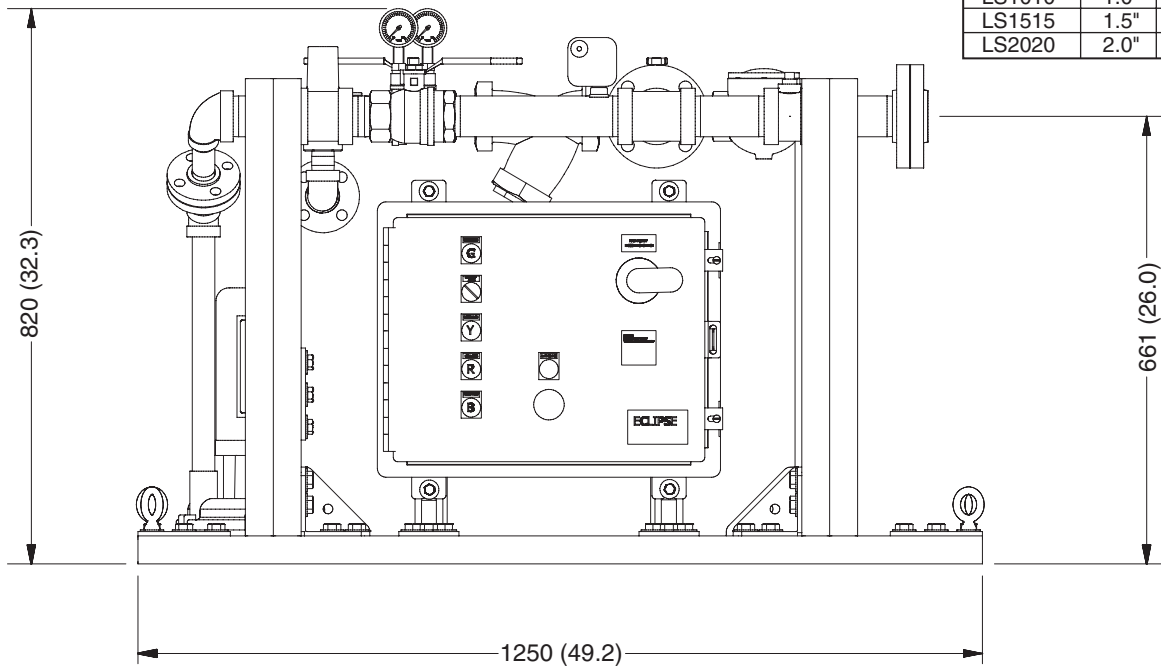


Note: Operation in shaded area requires optional high range spring in the relief regulator.

**Dimensions
millimeters (inches)
Low Flow Simplex**



Model No.	Dimensions	
	A	B
LS1010	1.0"	1.0"
LS1515	1.5"	1.5"
LS2020	2.0"	2.0"



Note 1 Pressure Switch Kit location when factory mounted
Note 2 When Pressure Switch Kit is supplied loose, it shall be installed in accordance with local codes.





Offered By:

Power Equipment Company
2011 Williamsburg Road
Richmond, Virginia 23231
Phone (804) 236-3800
Fax (804) 236-3882

www.peconet.com